

Demography	
Area (hectares)	2,712
Total Population (2022)	15,864
Population density (persons/ha)	5.85
Number of houses (2023)	7,631
Number of households (2023)	7,411
Average household size (persons)	2.14
Vacancy rate	2.6%
Unemployment rate	2.5%

	Bo'ness & Blackness	Falkirk
Bad or very bad general health	7.00%	7.12%
No central heating	1.38%	1.30%

Population	
	No. %
Mid-year population 2012	15,459
Mid-year population 2022	15,864
	Change +2.6%
Population 2022	
Males	7,614 48.0%
Females	7,996 50.4%

	Bo'ness & Blackness	Falkirk
0-4	988 6.2%	4.7%
5-11	1,208 7.6%	7.8%
12-15	737 4.6%	4.7%
16-24	1,368 8.6%	9.6%
25-44	3,860 24.3%	24.9%
45-59	3,346 21.1%	22.4%
60-64	1,081 6.8%	6.6%
65-74	1,927 12.1%	10.9%
75-84	1,044 6.6%	6.2%
85+	306 1.9%	2.2%
Total	15,864	100.0%

Dwellings by Council Tax band 2023			
	Bo'ness & Blackness	Falkirk	
	No. %	%	
Band A	2,693 35.3%	29.0%	
Band B	1,931 25.3%	25.3%	
Band C	653 8.6%	9.3%	
Band D	798 10.5%	12.3%	
Band E-H	1,556 20.4%	24.1%	
Total	7,631	100.0%	

Dwellings by type 2017			
	Bo'ness & Blackness	Falkirk	
	No. %	%	
Flat	1,934 26.4%	30.6%	
Terraced	2,137 29.2%	24.2%	

Education (22/23 School Leavers)		
School Leavers	Bo'ness & Blackness	Authority
% entering a positive destination	98.8%	95.4%
% entering Employment	32.5%	29.9%
% entering Further Education	23.7%	21.5%
% entering Higher Education	36.1%	38.6%
% entering Training	1.8%	3.2%
% entering Voluntary Work	2.4%	1.0%
% Unemployed Seeking	1.2%	2.6%
% Unemployed Not Seeking	0.0%	1.6%
% Personal Skills Development	2.4%	1.25%
% Not Known	0.0%	0.3%
% achieving level 4 in Literacy	98.8%	96.4%
% achieving level 5 in Literacy	87.0%	84.3%
% achieving level 4 in Numeracy	95.9%	95.7%
% achieving level 5 in Numeracy	71.6%	78.3%
Average total tariff score of lowest attaining 20%*	176	187
Average total tariff score of middle attaining 60%*	786	921
Average total tariff score of highest attaining 20%*	1850	2056

\* these figures may relate to a small number of pupils and should be interpreted with caution

Employment		
	Bo'ness & Blackness	Falkirk
	%	%
Primary	1.1%	1.3%
Manufacturing	33.9%	10.1%
Construction	3.1%	6.5%
Wholesale, Retail and Motor	9.8%	13.7%
Transport, Storage and Communication	7.6%	5.7%
Accommodation and Food	10.3%	7.2%
Financial and Property	0.3%	1.4%
Professional, Scientific and Administration	9.1%	10.0%
Public Services	19.9%	40.5%
Other	5.0%	0.3%

Ethnicity (2022 Census)		
	Bo'ness & Blackness	Falkirk
	%	%
White	98.1%	96.5%
Pakistani	0.2%	1.1%
Indian	0.2%	0.4%
Chinese	0.2%	0.2%
Other Asian	0.2%	0.3%
African	0.2%	0.4%
Caribbean or Black	0.1%	0.1%
Other ethnic group	0.3%	0.3%
Mixed	0.5%	0.7%

Benefits			
	Bo'ness & Blackness	Falkirk	
	No. population		
Working age population (16-64)	9,655		
Benefits	No. population		
Employment Support Allowance	448 46.36	48.94	
Income Support	12 1.24	2.21	
Disability Living Allowance	170 10.69	13.83	
Carers Allowance	240 15.11	16.93	
Child Maintenance Allowance	225 14.17	12.23	
Pension Credit	329 100.26	111.01	

Unemployment (16-64)			
	Bo'ness & Blackness	Falkirk	
	No. %	%	

Deprivation			
Scottish Index of Multiple Deprivation 2020			
	Bo'ness & Blackness	Falkirk	
Datazones in most deprived 20% Overall	1	35	
% of Falkirk Share		2.9%	
*No. of datazones within most deprived 20% by category			
Income	1	Employment	1
Blackness, Bo'ness - Carriden and Grahamsdyke	19.1%	Bo'ness - Newtown	19.0%
Health			0
Education	4	Crime	1
Bo'ness - Newtown	10.8%	Blackness, Bo'ness - Carriden and Grahams	16.6%
Bo'ness - Kinneil	4.0%	Housing	1
Bo'ness - Kinneil	10.8%	Bo'ness - Kinneil	11.3%
Blackness, Bo'ness - Carriden and Grahams	3.5%		
Access	2		
Bo'ness - Douglas	13.9%		
Grahamsdyke	7.8%		

The percentages above show where the datazone sits within the SIMD - 1 (1% / Most Deprived) / 6976 (100% / Least Deprived)

Population aged 0-24 within the most 20% deprived areas	254
% of young people (0-24) living in poverty	
Bo'ness & Blackness	5.9%

Historical SIMD Rankings*			
Datazone	2020	2016	2012
Bo'ness - Kinneil	1,360	935	763

Datazones are ranked from 1 most deprived to 6,976 least deprived in Scotland

The datazone **S01009254 (Bo'ness - Kinneil)** in Bo'ness Academy Catchment falls within the most 20% deprived areas in Scotland and is placed 19.5% in the Index.

**INCOME**  
18% of people are income deprived.

**EMPLOYMENT**  
14% of people are employment deprived.

**HEALTH**  
24% of people are prescribed drugs for anxiety, depression or psychosis.

**EDUCATION**  
School attendance is 72.4%. 9.7% of 16-19 year olds are not in full time education, employment or training. 0.8% of 17-21 year olds have entered university.

FSM Criteria			
	Bo'ness & Blackness	Falkirk	
CTC only income < £19,995		0.6%	0.9%
Income Based Job Seekers Allowance		0.0%	0.1%
Income Related Employment and Support Allowance		10.5%	7.2%
Income Support		5.6%	5.2%
Max CTC/Max WTC with income <£9,552		1.7%	1.0%
Universal Credit - Monthly earned income of not more than £796		81.6%	85.3%
Use with HQ approval only - Discretionary		0.0%	0.3%

Health Statistics			
	Bo'ness & Blackness	Falkirk	Scotland
Healthy Birth Weight	%	%	%
Bo'ness & Blackness - Douglas	80.5	80.7	80.9
Bo'ness & Blackness - Newtown	73.2		

Semi Detached	1,773	24.2%	23.4%
Detached and unknown	1,483	20.2%	21.9%
Total	7,327		100.0%

Dwellings 2023			
	Bo'ness & Blackness	Falkirk	
	No.	%	%
Occupied	7,411	97.1%	97.3%
Vacant	195	2.6%	2.4%
Second Homes	12	0.2%	0.1%
Occupied dwellings Exempt from paying council tax	67	0.9%	1.3%
Single Adult council tax discount (percentage of occupied)	3,036	39.8%	40.2%
	7631		

#### Health Continued

Child dental health in primary 1	%	%	%
Bo'ness & Blackness - Douglas	79.1	75.5	73.6
Bo'ness & Blackness - Newtown	85.2		
Bo'ness & Blackness - Kinneil	78.9		
Carriden and Grahamsdyke	69.6		

Child dental health in primary 7	%	%	%
Bo'ness & Blackness - Douglas	91.5	78.1	75.0
Bo'ness & Blackness - Newtown	90.9		
Bo'ness & Blackness - Kinneil	78.3		
Blackness, Bo'ness & Blackness -	80.3		

Uptake of HPV vaccine in S3 girls	%	%	%
Bo'ness & Blackness - Douglas	78.8	73.4	80.7
Bo'ness & Blackness - Newtown	84.5		
Bo'ness & Blackness - Kinneil	82.4		
Blackness, Bo'ness & Blackness -	84.6		

Asthma Patient hospitalisations	per 100,000		
Bo'ness & Blackness - Douglas	67.7	64.6	76.2
Bo'ness & Blackness - Newtown	69.8		
Bo'ness & Blackness - Kinneil	128.3		
Blackness, Bo'ness & Blackness -	56.1		

Emergency patient hospitalisations	per 100,000		
Bo'ness & Blackness - Douglas	8887.6	8832.3	7242.5
Bo'ness & Blackness - Newtown	9471.1		
Bo'ness & Blackness - Kinneil	10215.8		
Blackness, Bo'ness & Blackness -	8451		

Road Traffic accident casualties	per 100,000		
Bo'ness & Blackness - Douglas	35.8	44.9	51.0
Bo'ness & Blackness - Newtown	39.7		
Bo'ness & Blackness - Kinneil	73.4		
Blackness, Bo'ness & Blackness -	46.9		

The cells highlighted show if the number or percentage is better or worse than the Falkirk rate, this depends on the indicator.

Male	125	2.6%	3.2%
Female	115	2.3%	2.2%
Total	240	2.5%	2.7%

Aged 16-24	40	2.9%	1.4%
------------	----	------	------

Universal Credit	No.	% of Claimants	Falkirk
Single, no child dependant	574	44.2%	49.8%
Single, with child dependant(s)	492	37.9%	34.5%
Couple, no child dependant	45	3.5%	3.7%
Couple, with child dependant(s)	187	14.4%	12.1%
Total	1297		

Housing Benefit Claimants	No.	%	Falkirk
HB with no Children	554	95.7%	91.7%
HB with 1 Child	20	3.5%	2.2%
HB with 2 Children	5	0.9%	0.6%
BH with 3+ Children* data	-	0.0%	0.2%
	579		

#### Free School Meals and Clothing Grants 24/25

*% of Children Aged 5-15	Bo'ness & Blackness		Falkirk
	No.	%	%
Free School Meals	478	24.6%	20.8%
Clothing Grants	486	25.0%	25.9%

Bo'ness & Blackness - Kinneil	77.8
Blackness, Bo'ness & Blackness - Carriden and Grahamsdyke	78.2

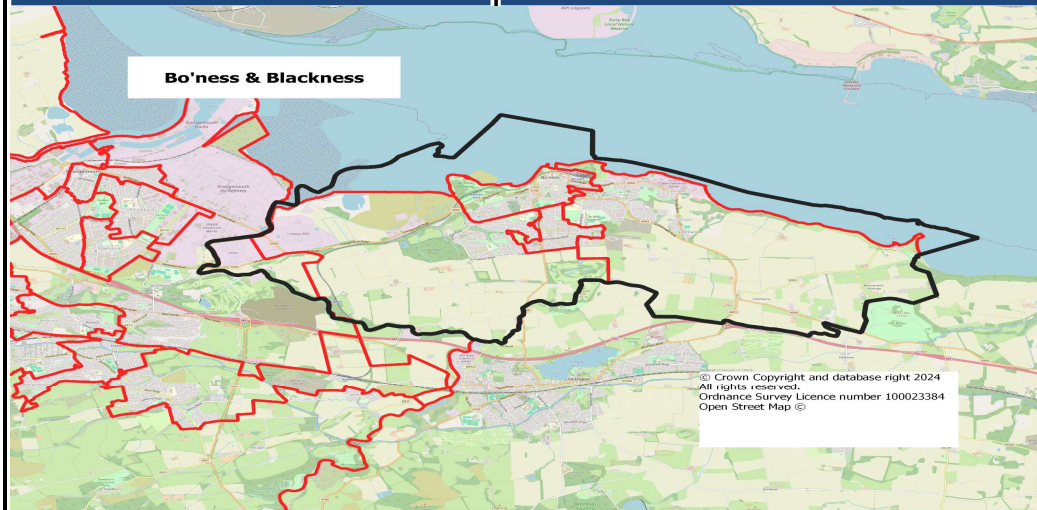
Babies exclusively breastfed at 6-8 weeks	%	%	%
Bo'ness & Blackness - Douglas	35.20	23.6	32.0
Bo'ness & Blackness - Newtown	25.00		
Bo'ness & Blackness - Kinneil	20.50		
Blackness, Bo'ness & Blackness - Carriden and Grahamsdyke	32.90		

Immunisation uptake at 24 months - 6 in 1	%	%	%
Bo'ness & Blackness - Douglas	98.1	96.4	96.6
Bo'ness & Blackness - Newtown	97.4		
Bo'ness & Blackness - Kinneil	100		
Blackness, Bo'ness & Blackness - Carriden and Grahamsdyke	94.6		

Immunisation uptake at 24 months - MMR	%	%	%
Bo'ness & Blackness - Douglas	96.3	94.1	93.8
Bo'ness & Blackness - Newtown	96.2		
Bo'ness & Blackness - Kinneil	98.7		
Blackness, Bo'ness & Blackness - Carriden and Grahamsdyke	92.6		

Developmental concerns at 27-30 months	%	%	%
Bo'ness & Blackness - Douglas	18.20	16.7	16.9
Bo'ness & Blackness - Newtown	15.80		
Bo'ness & Blackness - Kinneil	16		
Blackness, Bo'ness & Blackness - Carriden and Grahamsdyke	11.70		

Child healthy weight in primary 1	%	%	%
Bo'ness & Blackness - Douglas	77.8	77.5	74.7
Bo'ness & Blackness - Newtown	88.6		
Bo'ness & Blackness - Kinneil	80		
Blackness, Bo'ness & Blackness - Carriden and Grahamsdyke	82.7		



\*\*\* Black line represents ward boundary, Red lines represent 2011 Intermediate datazones

#### Sources:

SIMD 2020: Scottish Government  
<http://www.gov.scot/Topics/Statistics/SIMD>  
 Population  
<http://www.nrscotland.gov.uk/statistics-and-data>  
 Dwellings  
<http://www.nrscotland.gov.uk/statistics-and-data>  
 Unemployment and Benefits  
<https://www.nomisweb.co.uk/query>  
<https://stat-xplore.dwp.gov.uk/webapi/jst/login.xhtml>  
 Health Statistics  
<https://www.scotpho.org.uk/>